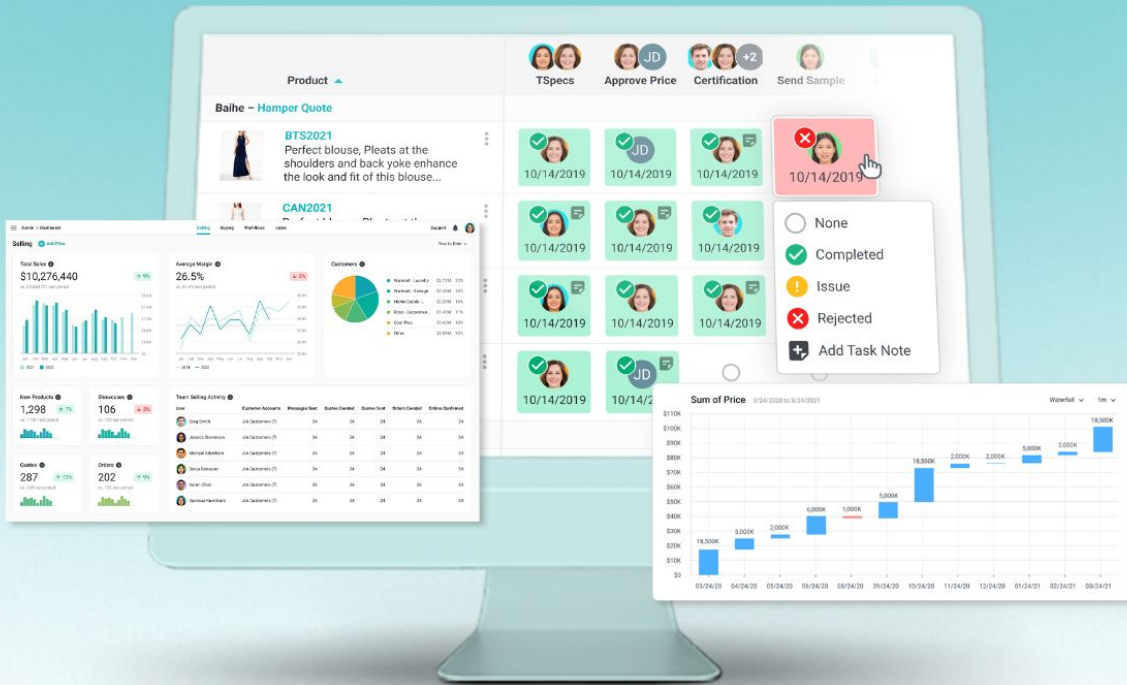


VISIBILITY



Your product lifecycle. Your bird's eye view.

Surefront gives you a single source of truth for product information, centralizing products images and attributes in one easy to navigate system.

With the SmartCatalog feature, employees gain the ability to see all of your product images in any configuration they want. Retailers and suppliers will benefit from the ability to create robust product showcases with product images and data in just a few clicks, speeding the entire sales process.

Empower your team in more ways than one.



COLLABORATION

Our "Many to Many" feature allows for custom multi-entity communication.



CONTROL

Customize your team's workflows, permissions, catalog structure, and more.



SPEED

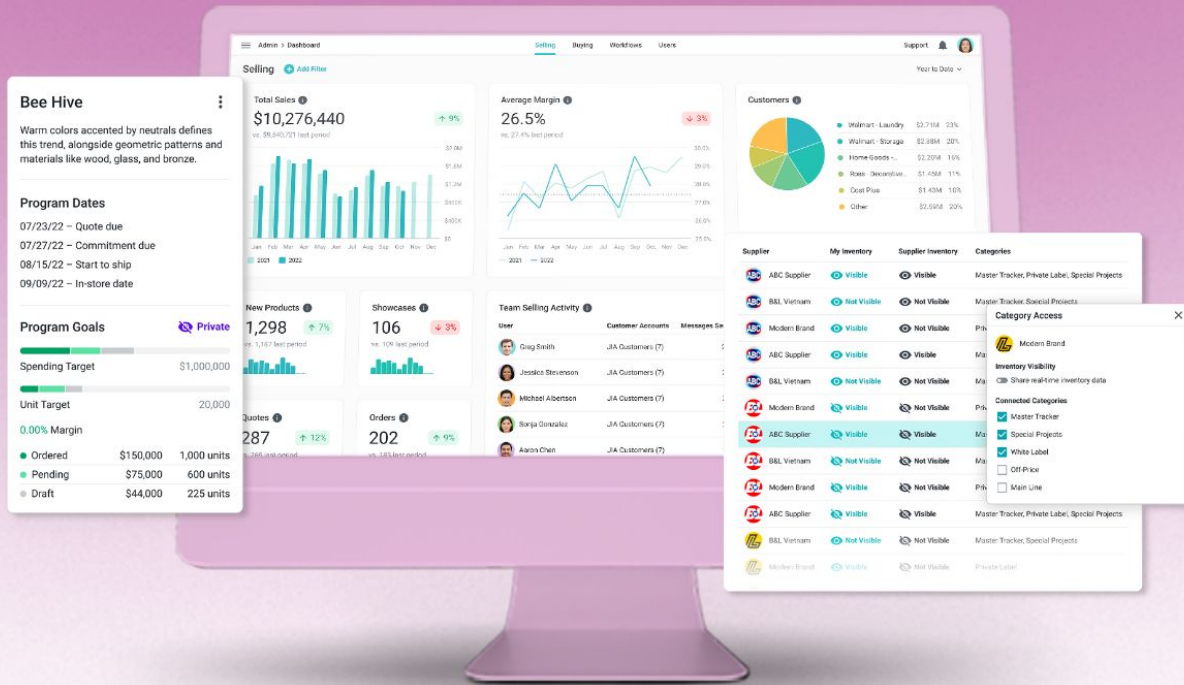
Get your team communicating with one another AND all of your external vendors in one place in real-time.

Surefront®

MASTER YOUR PRODUCT DEVELOPMENT

Email us at sales@surefront.com for more information.

CONTROL



SCAN IT!

Your product lifecycle. Customized for your needs.

It's easy to lose control of your product lifecycle when you are working with multiple teams across disparate tools. With Surefront, you gain that control back.

Customize workflows for your team's unique needs. Assign buying responsibilities by department or category. Give users access permissions, then share selected information with anyone inside, or outside of your organization.

Empower your team in more ways than one.



COLLABORATION

Our "Many to Many" feature allows for custom multi-entity communication.



VISIBILITY

Revolutionize your workflow with real time image accessibility.



SPEED

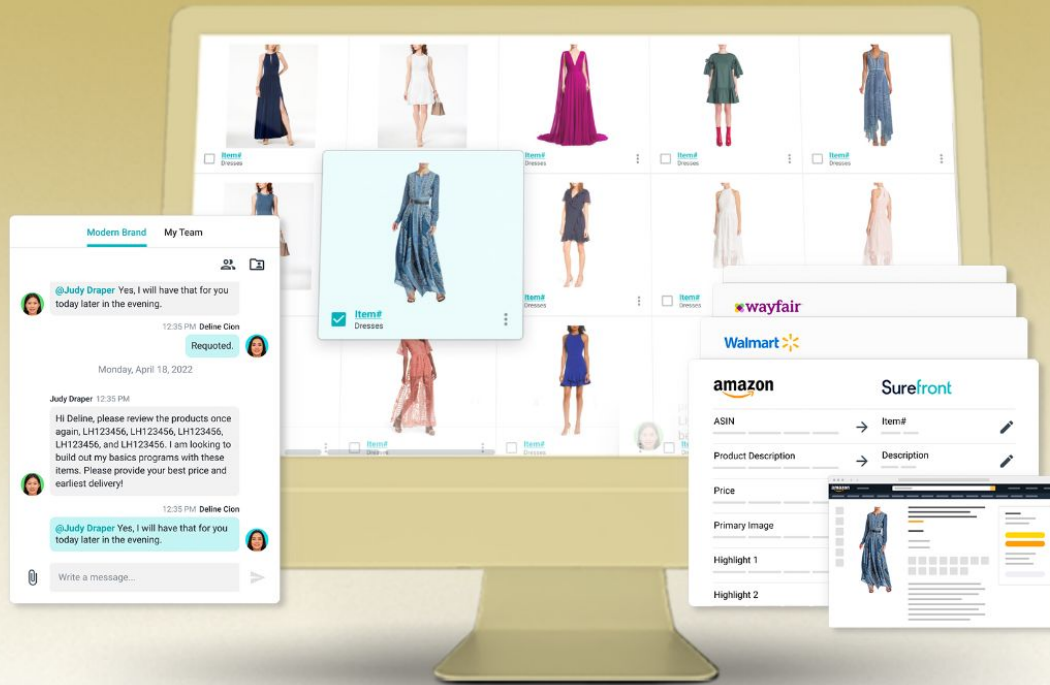
Get your team communicating with one another AND all of your external vendors in one place in real-time.

Surefront®

MASTER YOUR PRODUCT DEVELOPMENT

Email us at sales@surefront.com for more information.

SPEED



SCAN IT!

Your product lifecycle. Accelerated.

To get product to market in a timely fashion, you first need fast access to your product data. Surefront lets you consolidate all of your disparate data into one easily accessible platform.

Your team can chat with all of your external vendors in one place by automating data entry, bulk editing, and product uploads. Do it all in one system with a retail PLM that takes a fraction of the time to onboard as the competition.

Empower your team in more ways than one.



COLLABORATION

Our "Many to Many" feature allows for custom multi-entity communication.



CONTROL

Customize your team's workflows, permissions, catalog structure, and more.



VISIBILITY

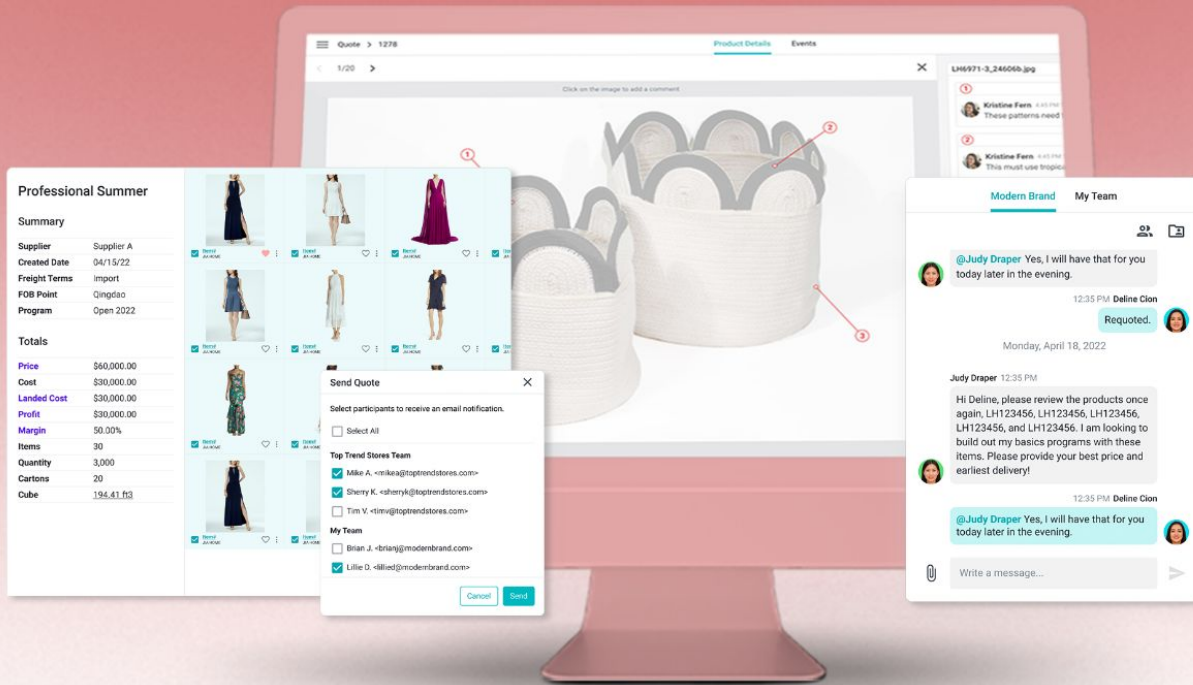
Revolutionize your workflow with real time image accessibility.

Surefront®

MASTER YOUR PRODUCT DEVELOPMENT

Email us at sales@surefront.com for more information.

COLLABORATION



SCAN IT!

Your product. Your communication powerhouse.

Product data goes through so many touchpoints and formats throughout its lifecycle that it can be hard to achieve actionable insights into your team's process. That's why it's important to have a single PLM that tracks every single communication throughout the product lifecycle process. Surefront has a patented contextual communication feature that lets you work with ALL of your team members in one system, and is your single source of truth for all of your customer and vendor relationships.

Empower your team in more ways than one.



SPEED

Get your team communicating with one another AND all of your external vendors in one place in real-time.



CONTROL

Customize your team's workflows, permissions, catalog structure, and more.



VISIBILITY

Revolutionize your workflow with real time image accessibility.

Surefront®

MASTER YOUR PRODUCT DEVELOPMENT

Email us at sales@surefront.com for more information.